

Ascent 100 II Deco 120

ASCENT 100 II DECO 650 3K DALI EMG 120
2060603



Product features

- The ASCENT 100 II DECO 650 3K DALI EMG 120 is a high efficient DALI dimmable downlight luminaire with 3 hour emergency, luminous flux: 638lm, luminaire efficacy: 91lm/W, Colour rendering index Ra >80, Colour temperature: 3000K Warm White, Average life rated at 50,000Hrs, Class II, Protection rating IP44/IK02, Cut out dimensions: 137mm



PRODUCT OVERVIEW

IPC Code	2060603
Product name	ASCENT 100 II DECO 650 3K DALI EMG 120
Technology	LED
Housing	Aluminium
Mount	Recessed
General application	Hospitality, Retail, Office,
Certifications	EUNEW001
ETIM Class	EC001744
Fixture luminous flux (lm)	638
Luminaire efficacy (lm/W)	91
LOR (%)	100
Colour temperature (K)	3000
CRI (Ra)	80
Colour Consistency (SDCM)	3
Glare control	20.4
Photobiological Risk Group	Group 0
Total power consumption (W)	7
Electrical protection	Class II
Control gear type	DALI Emergency
Control gear mounting	Remote
Dimmable	Yes
Minimum dimming level (%)	1
Housing colour	White - RAL9016
IP rating	IP40
IK rating	IK02
Product EAN number	5025768606030
Lamps	Yes
Included lamp	INTEGRATED LED

DATA TABLE

Ascent 100 II Deco 120

ASCENT 100 II DECO 650 3K DALI EMG 120
2060603

General data

IPC Code	2060603
Product name	ASCENT 100 II DECO 650 3K DALI EMG 120
Technology	LED
Housing	Aluminium
Mount	Recessed
General application	Hospitality,Retail,Office,
Operating temperature range (°C)	0-25
Certifications	EUNEW001
ETIM Class	EC001744

Optical data

Fixture luminous flux (lm)	638
Luminaire efficacy (lm/W)	91
LOR (%)	100
Colour temperature (K)	3000
CRI (Ra)	80
Colour Consistency (SDCM)	3
Beam angle (Rated) (°)	85
Distribution type	Direct
Glare control	20.4
Photobiological Risk Group	Group 0
Emergency duration (h)	3

Electrical data

Total power consumption (W)	7
Mains voltage (V)	220-240V~
Electrical protection	Class II
Control gear type	DALI Emergency
Control gear mounting	Remote
Dimmable	Yes
Minimum dimming level (%)	1
Drive current (mA)	350
Inrush Current (A)	45
Inrush Duration (µs)	20
Glow Wire Test (°C)	650
Nominal Frequency (Hz)	50/60Hz
Max. Luminaires per 10A C Breaker	50
Max. Luminaires per 16A C Breaker	80

Lifetime data

Lumen maintenance - L70 B50	60000
Lumen maintenance - L70 B20	60000
Lumen maintenance - L70 B10	60000
Lumen maintenance - L80 B50	60000
Lumen maintenance - L80 B20	60000
Lumen maintenance - L80 B10	60000
Lumen maintenance - L90 B50	60000
Lumen maintenance - L90 B20	48000

Ascent 100 II Deco 120

ASCENT 100 II DECO 650 3K DALI EMG 120
2060603

Lumen maintenance - L90 B10	34000
-----------------------------	-------

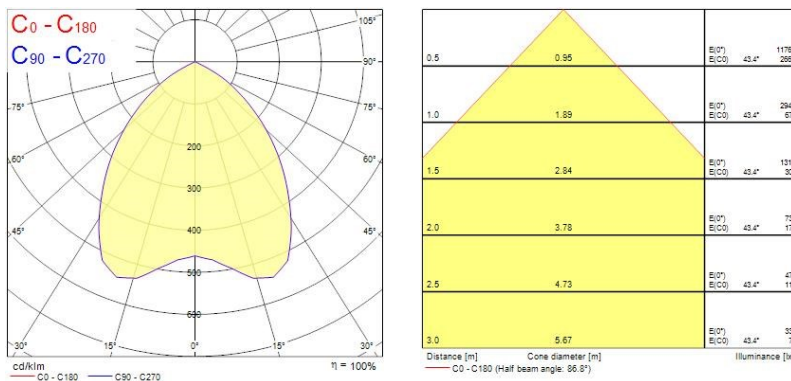
Physical data

Housing colour	White - RAL9016
IP rating	IP40
IK rating	IK02
Diffuser finish	Opal
Diffuser material	Acrylic
Reflector finish	Deco
Nominal Product Width (mm)	150
Nominal Product Height (mm)	94
Nominal Product Diameter (mm)	120
Weight (kg)	1.43

Packaging

Single packaging type	Carton
Product EAN number	5025768606030
Packaging single length / height (cm)	30.0
Packaging single width (cm)	30.0
Packaging single depth (cm)	12.5
DUN14 (outer)	05025768606030
Units per outer package	1
Packaging outer length / height (cm)	30.0
Packaging outer width (cm)	30.0
Packaging outer depth (cm)	12.5

PHOTOMETRY



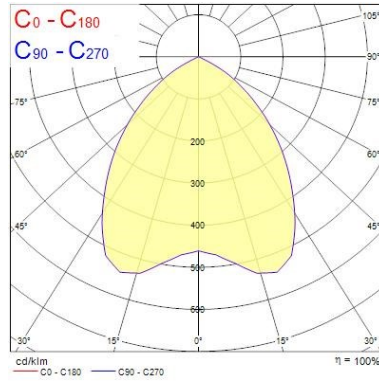
Ascent 100 II Deco 120

ASCENT 100 II DECO 650 3K DALI EMG 120
2060603

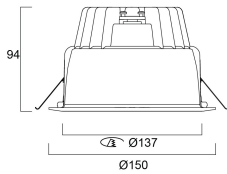
0.5	0.95	E(0°) E(C0)	43.4°	206 89
1.0	1.89	E(0°) E(C0)	43.4°	78 31
1.5	2.84	E(0°) E(C0)	43.4°	34 13
2.0	3.78	E(0°) E(C0)	43.4°	19 7
2.5	4.73	E(0°) E(C0)	43.4°	12 5
3.0	5.67	E(0°) E(C0)	43.4°	8 3

Distance [m] Cone diameter [m] Illuminance [lx]

— C0 - C180 (Half beam angle: 86.8°)




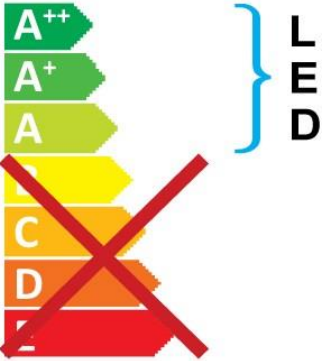
TECHNICAL DRAWINGS




Ascent 100 II Deco 120
ASCENT 100 II DECO 650 3K DALI EMG 120
2060603


Concord 2060603

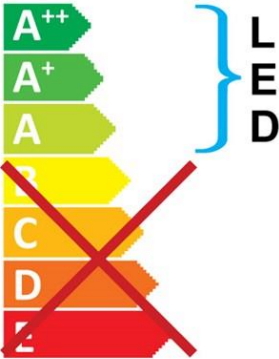
 This luminaire contains built in LED lamps.




The lamps cannot be changed in the luminaire.

874/2012 

 This luminaire contains built in LED lamps.



The lamps cannot be changed in the luminaire.

Concord 2060603 

874/2012