



SERIES DK

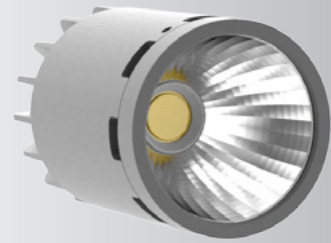
- CREE COB
- Patent design modules
- Various frames options
- Quality finishing
- Step McAdam ≤ 4

Lifespan >50000 hours (L70)

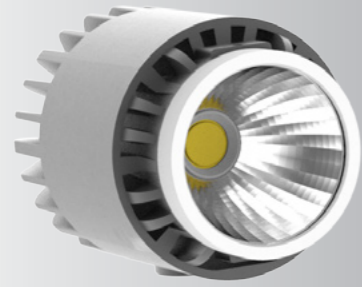
Warranty 5 years / 22000 hours

MODULES

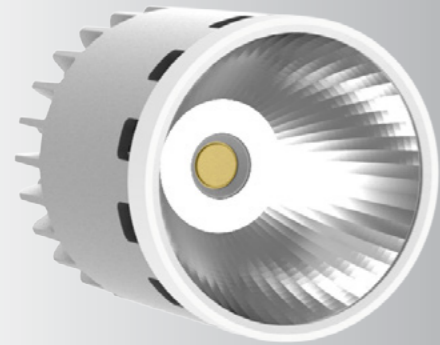
SERIES DK



10 W

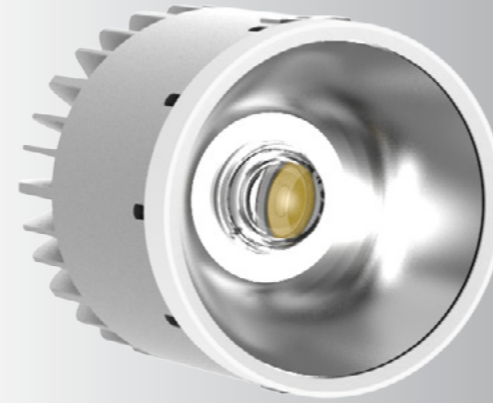


15 W

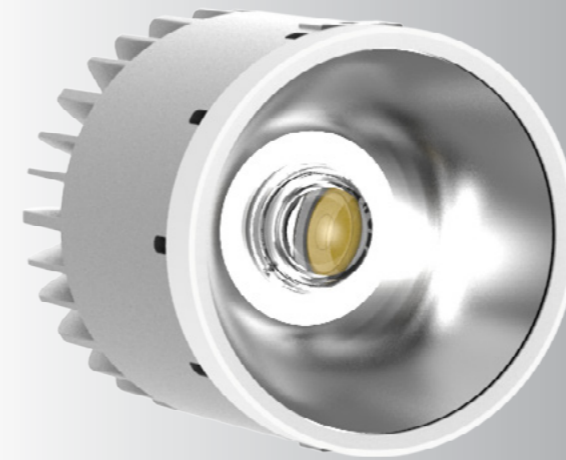


20 W

SERIES DK



30 W



40 W

FRAME OPTIONS

SERIES DK



| | |
|---------------|----------------------------------|
| Power Options | 10 W / 15 W / 20 W / 30 W / 40 W |
| Body | Die-cast Aluminium, ADC 12 |
| Colour | White |

Frame Code 01



| | |
|---------------|----------------------------------|
| Power Options | 10 W / 15 W / 20 W / 30 W / 40 W |
| Body | Die-cast Aluminium, ADC 12 |
| Colour | White |

Frame Code 02



| | |
|---------------|----------------------------|
| Power Options | 10 W / 15 W / 20 W |
| Body | Die-cast Aluminium, ADC 12 |
| Colour | White |

Frame Code 03

SERIES DK



| | |
|---------------|----------------------------|
| Power Options | 10 W |
| Body | Die-cast Aluminium, ADC 12 |
| Colour | White |

Frame Code 04



| | |
|---------------|----------------------------|
| Power Options | 10 W |
| Body | Die-cast Aluminium, ADC 12 |
| Colour | White |

Frame Code 05



| | |
|---------------|----------------------------|
| Power Options | 15 W / 20 W / 30 W / 40 W |
| Body | Die-cast Aluminium, ADC 12 |
| Reflector | Anodic oxidized |
| Colour | White |

Frame Code 06

10 W

SERIES DK



Technical

| | |
|---------------------|-----------------------------------|
| LED | CREE |
| LED Quantity | 1 pc |
| System Power | 10 W |
| Lumen Output | 900 lm @ 4000 K |
| Colour Temperature | 2700 K / 3000 K / 4000 K / 5000 K |
| CRI | >80 Ra / >90 Ra |
| Beam Angle | 15° / 30° / 60° |
| Input Current | 230 mA |
| UGR | <23 |
| System Efficiency | up to 90 lm/W |
| SDCM (MacAdam step) | <4 |
| Starting Time | <1s |
| Dimming | 0-10 V / PWM / DALI / TRIAC |
| Rated Lifespan | >50000 hrs (L70) |

Materials

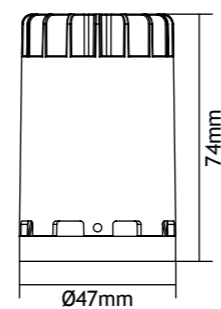
| | |
|--------------|----------------------------|
| Body Shell | Die-cast Aluminium, ADC 12 |
| Lens | Clear |
| Colour | Grey |
| PCB | Aluminium 1070 |
| Installation | Within Ø50 mm frame |
| Weight | 0.24 kg |

Power Supply

| | |
|-----------------|------------------|
| Type | Constant Current |
| Input Voltage | AC100-240 V |
| Input Frequency | 50 / 60 Hz |
| Output Current | 230 mA |
| Power Factor | > 0.95 |
| Efficiency | > 86 % |

Environmental

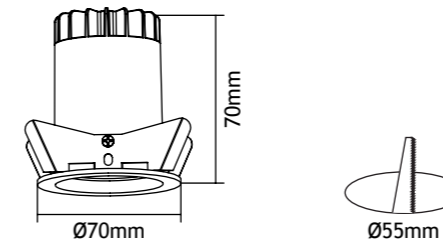
| | |
|-----------------------|----------------|
| Operating Temperature | -20°C - 40°C |
| Humidity | 10 % - 90 % RH |
| IP Rating | IP20 |



SERIES DK



Frame Code: 01

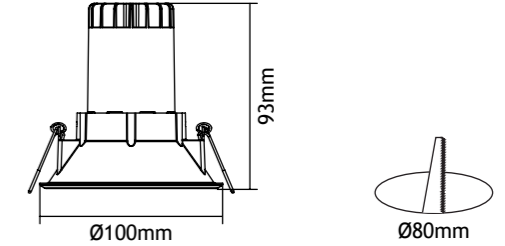


Materials

| | |
|--------------|----------------------------|
| Frame | Die-cast Aluminium, ADC 12 |
| Colour | White |
| Installation | Recessed |
| Weight | 0.40 kg |



Frame Code: 02

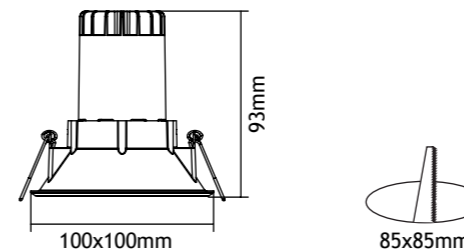


Materials

| | |
|--------------|----------------------------|
| Frame | Die-cast Aluminium, ADC 12 |
| Colour | White |
| Installation | Recessed |
| Weight | 0.40 kg |



Frame Code: 03

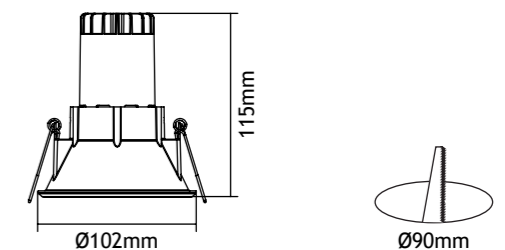


Materials

| | |
|--------------|----------------------------|
| Frame | Die-cast Aluminium, ADC 12 |
| Colour | White |
| Installation | Recessed |
| Weight | 0.42 kg |



Frame Code: 04



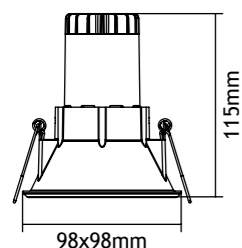
Materials

| | |
|--------------|----------------------------|
| Frame | Die-cast Aluminium, ADC 12 |
| Colour | White |
| Installation | Recessed |
| Weight | 0.34 kg |

SERIES DK

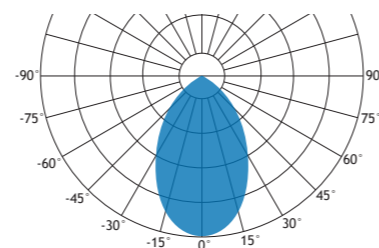
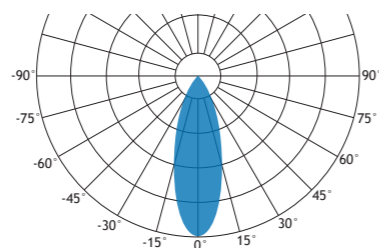
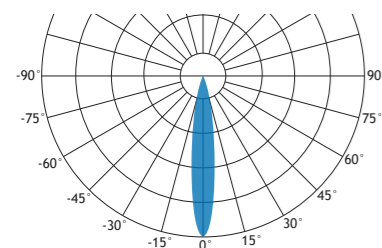


Frame Code: 05



Materials

| | |
|--------------|----------------------------|
| Frame | Die-cast Aluminium, ADC 12 |
| Colour | White |
| Installation | Recessed |
| Weight | 0.34 kg |



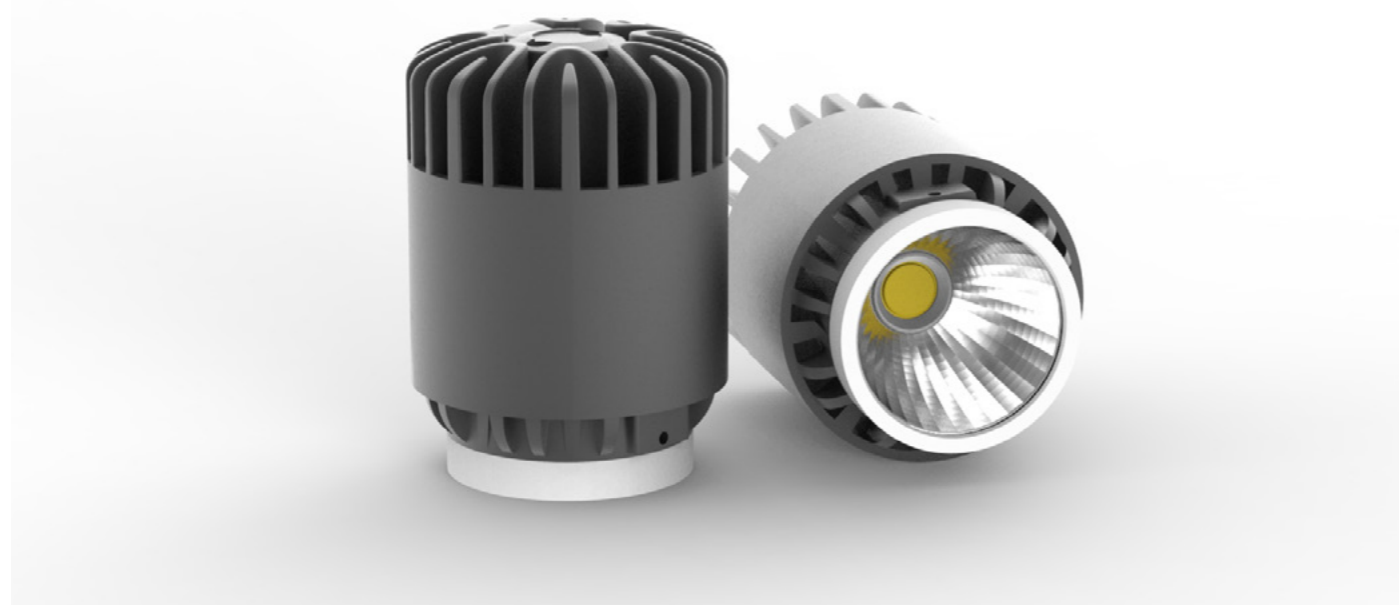
Product Order Codes

| Power | Colour Temperature | Beam Angle | CRI | Dimmable | Product Code |
|-------|--------------------|------------|--------|----------|-------------------|
| 10 W | 2700 K | 15° | >80 Ra | No | DK10-27158N-**-** |
| 10 W | 3000 K | 15° | >80 Ra | No | DK10-30158N-**-** |
| 10 W | 4000 K | 15° | >80 Ra | No | DK10-40158N-**-** |
| 10 W | 5000 K | 15° | >80 Ra | No | DK10-50158N-**-** |
| 10 W | 2700 K | 30° | >80 Ra | No | DK10-27308N-**-** |
| 10 W | 3000 K | 30° | >80 Ra | No | DK10-30308N-**-** |
| 10 W | 4000 K | 30° | >80 Ra | No | DK10-40308N-**-** |
| 10 W | 5000 K | 30° | >80 Ra | No | DK10-50308N-**-** |
| 10 W | 2700 K | 60° | >80 Ra | No | DK10-27608N-**-** |
| 10 W | 3000 K | 60° | >80 Ra | No | DK10-30608N-**-** |
| 10 W | 4000 K | 60° | >80 Ra | No | DK10-40608N-**-** |
| 10 W | 5000 K | 60° | >80 Ra | No | DK10-50608N-**-** |

SERIES DK

| Power | Colour Temperature | Beam Angle | CRI | Dimmable | Product Code |
|-------|--------------------|------------|--------|----------|-------------------|
| 10 W | 2700 K | 15° | >90 Ra | No | DK10-27159N-**-** |
| 10 W | 3000 K | 15° | >90 Ra | No | DK10-30159N-**-** |
| 10 W | 4000 K | 15° | >90 Ra | No | DK10-40159N-**-** |
| 10 W | 5000 K | 15° | >90 Ra | No | DK10-50159N-**-** |
| 10 W | 2700 K | 30° | >90 Ra | No | DK10-27309N-**-** |
| 10 W | 3000 K | 30° | >90 Ra | No | DK10-30309N-**-** |
| 10 W | 4000 K | 30° | >90 Ra | No | DK10-40309N-**-** |
| 10 W | 5000 K | 30° | >90 Ra | No | DK10-50309N-**-** |
| 10 W | 2700 K | 60° | >90 Ra | No | DK10-27609N-**-** |
| 10 W | 3000 K | 60° | >90 Ra | No | DK10-30609N-**-** |
| 10 W | 4000 K | 60° | >90 Ra | No | DK10-40609N-**-** |
| 10 W | 5000 K | 60° | >90 Ra | No | DK10-50609N-**-** |
| 10 W | 2700 K | 15° | >80 Ra | Yes | DK10-27158D-**-** |
| 10 W | 3000 K | 15° | >80 Ra | Yes | DK10-30158D-**-** |
| 10 W | 4000 K | 15° | >80 Ra | Yes | DK10-40158D-**-** |
| 10 W | 5000 K | 15° | >80 Ra | Yes | DK10-50158D-**-** |
| 10 W | 2700 K | 30° | >80 Ra | Yes | DK10-27308D-**-** |
| 10 W | 3000 K | 30° | >80 Ra | Yes | DK10-30308D-**-** |
| 10 W | 4000 K | 30° | >80 Ra | Yes | DK10-40308D-**-** |
| 10 W | 5000 K | 30° | >80 Ra | Yes | DK10-50308D-**-** |
| 10 W | 2700 K | 60° | >80 Ra | Yes | DK10-27608D-**-** |
| 10 W | 3000 K | 60° | >80 Ra | Yes | DK10-30608D-**-** |
| 10 W | 4000 K | 60° | >80 Ra | Yes | DK10-40608D-**-** |
| 10 W | 5000 K | 60° | >80 Ra | Yes | DK10-50608D-**-** |
| 10 W | 2700 K | 15° | >90 Ra | Yes | DK10-27159D-**-** |
| 10 W | 3000 K | 15° | >90 Ra | Yes | DK10-30159D-**-** |
| 10 W | 4000 K | 15° | >90 Ra | Yes | DK10-40159D-**-** |
| 10 W | 5000 K | 15° | >90 Ra | Yes | DK10-50159D-**-** |
| 10 W | 2700 K | 30° | >90 Ra | Yes | DK10-27309D-**-** |
| 10 W | 3000 K | 30° | >90 Ra | Yes | DK10-30309D-**-** |
| 10 W | 4000 K | 30° | >90 Ra | Yes | DK10-40309D-**-** |
| 10 W | 5000 K | 30° | >90 Ra | Yes | DK10-50309D-**-** |
| 10 W | 2700 K | 60° | >90 Ra | Yes | DK10-27609D-**-** |
| 10 W | 3000 K | 60° | >90 Ra | Yes | DK10-30609D-**-** |
| 10 W | 4000 K | 60° | >90 Ra | Yes | DK10-40609D-**-** |
| 10 W | 5000 K | 60° | >90 Ra | Yes | DK10-50609D-**-** |

** Add frame code (if required)



Technical

| | |
|---------------------|-----------------------------------|
| LED | CREE |
| LED Quantity | 1 pc |
| System Power | 15 W |
| Lumen Output | 1275 lm @ 4000 K |
| Colour Temperature | 2700 K / 3000 K / 4000 K / 5000 K |
| CRI | >80 Ra / >90 Ra |
| Beam Angle | 15° / 30° / 60° |
| Input Current | 350 mA |
| UGR | <19 |
| System Efficiency | up to 90 lm/W |
| SDCM (MacAdam step) | <4 |
| Starting Time | <1s |
| Dimming | 0-10 V / PWM / DALI / TRIAC |
| Rated Lifespan | >50000 hrs (L70) |

Materials

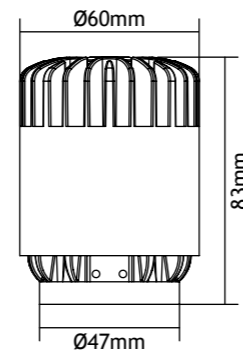
| | |
|--------------|----------------------------|
| Body Shell | Die-cast Aluminium, ADC 12 |
| Lens | Clear |
| Colour | Grey |
| PCB | Aluminium 1070 |
| Installation | Frames optional |
| Weight | 0.40 kg |

Power Supply

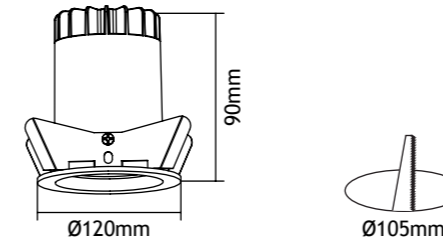
| | |
|-----------------|------------------|
| Type | Constant Current |
| Input Voltage | AC100-240 V |
| Input Frequency | 50 / 60 Hz |
| Output Current | 350 mA |
| Power Factor | > 0.95 |
| Efficiency | > 86 % |

Environmental

| | |
|-----------------------|----------------|
| Operating Temperature | -20°C - 40°C |
| Humidity | 10 % - 90 % RH |
| IP Rating | IP20 |



Frame Code: 01

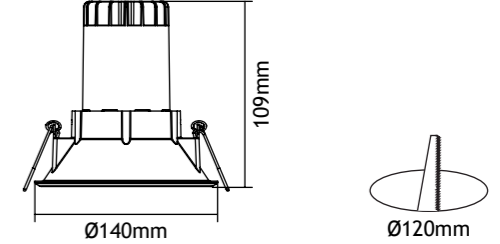


Materials

| | |
|--------------|----------------------------|
| Frame | Die-cast Aluminium, ADC 12 |
| Colour | White |
| Installation | Recessed |
| Weight | 0.65 kg |



Frame Code: 02

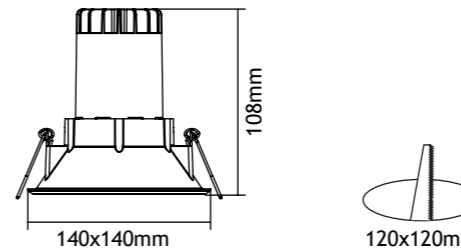


Materials

| | |
|--------------|----------------------------|
| Frame | Die-cast Aluminium, ADC 12 |
| Colour | White |
| Installation | Recessed |
| Weight | 0.67 kg |



Frame Code: 03

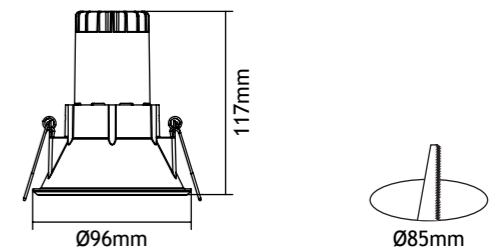


Materials

| | |
|--------------|----------------------------|
| Frame | Die-cast Aluminium, ADC 12 |
| Colour | White |
| Installation | Recessed |
| Weight | 0.70 kg |



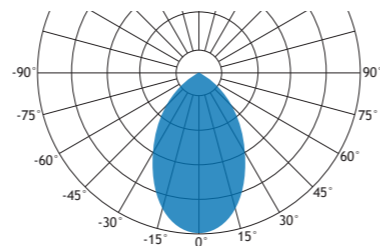
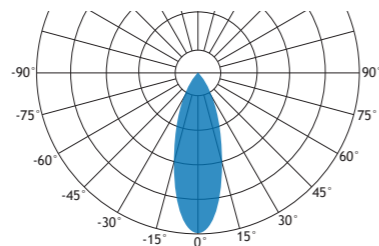
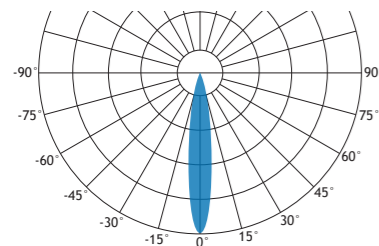
Frame Code: 06



Materials

| | |
|--------------|----------------------------|
| Frame | Die-cast Aluminium, ADC 12 |
| Colour | White |
| Reflector | Anodic Oxidized |
| Installation | Recessed |
| Weight | 0.60 kg |

SERIES DK



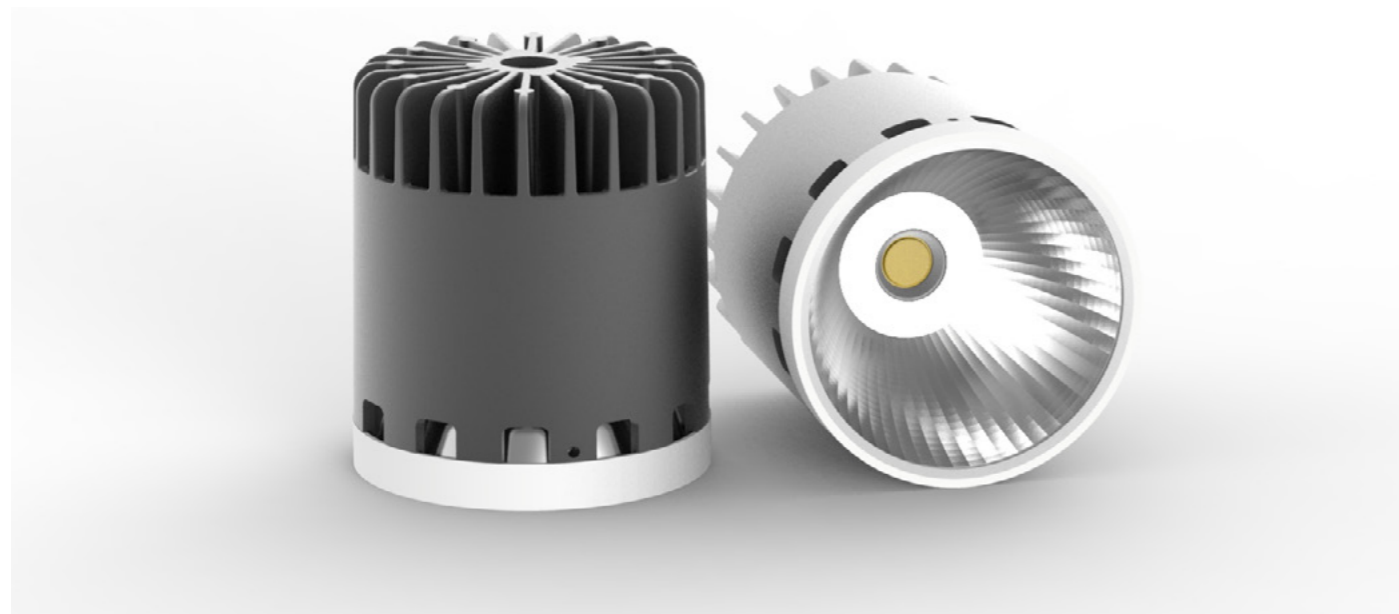
Product Order Codes

| Power | Colour Temperature | Beam Angle | CRI | Dimmable | |
|-------|--------------------|------------|--------|----------|----------------|
| 15 W | 2700 K | 15° | >80 Ra | No | DK15-27158N-** |
| 15 W | 3000 K | 15° | >80 Ra | No | DK15-30158N-** |
| 15 W | 4000 K | 15° | >80 Ra | No | DK15-40158N-** |
| 15 W | 5000 K | 15° | >80 Ra | No | DK15-50158N-** |
| 15 W | 2700 K | 30° | >80 Ra | No | DK15-27308N-** |
| 15 W | 3000 K | 30° | >80 Ra | No | DK15-30308N-** |
| 15 W | 4000 K | 30° | >80 Ra | No | DK15-40308N-** |
| 15 W | 5000 K | 30° | >80 Ra | No | DK15-50308N-** |
| 15 W | 2700 K | 60° | >80 Ra | No | DK15-27608N-** |
| 15 W | 3000 K | 60° | >80 Ra | No | DK15-30608N-** |
| 15 W | 4000 K | 60° | >80 Ra | No | DK15-40608N-** |
| 15 W | 5000 K | 60° | >80 Ra | No | DK15-50608N-** |
| 15 W | 2700 K | 15° | >90 Ra | No | DK15-27159N-** |
| 15 W | 3000 K | 15° | >90 Ra | No | DK15-30159N-** |
| 15 W | 4000 K | 15° | >90 Ra | No | DK15-40159N-** |
| 15 W | 5000 K | 15° | >90 Ra | No | DK15-50159N-** |
| 15 W | 2700 K | 30° | >90 Ra | No | DK15-27309N-** |
| 15 W | 3000 K | 30° | >90 Ra | No | DK15-30309N-** |
| 15 W | 4000 K | 30° | >90 Ra | No | DK15-40309N-** |
| 15 W | 5000 K | 30° | >90 Ra | No | DK15-50309N-** |
| 15 W | 2700 K | 60° | >90 Ra | No | DK15-27609N-** |
| 15 W | 3000 K | 60° | >90 Ra | No | DK15-30609N-** |
| 15 W | 4000 K | 60° | >90 Ra | No | DK15-40609N-** |
| 15 W | 5000 K | 60° | >90 Ra | No | DK15-50609N-** |
| 15 W | 2700 K | 15° | >80 Ra | Yes | DK15-27158D-** |
| 15 W | 3000 K | 15° | >80 Ra | Yes | DK15-30158D-** |
| 15 W | 4000 K | 15° | >80 Ra | Yes | DK15-40158D-** |
| 15 W | 5000 K | 15° | >80 Ra | Yes | DK15-50158D-** |
| 15 W | 2700 K | 30° | >80 Ra | Yes | DK15-27308D-** |
| 15 W | 3000 K | 30° | >80 Ra | Yes | DK15-30308D-** |
| 15 W | 4000 K | 30° | >80 Ra | Yes | DK15-40308D-** |
| 15 W | 5000 K | 30° | >80 Ra | Yes | DK15-50308D-** |
| 15 W | 2700 K | 60° | >80 Ra | Yes | DK15-27608D-** |
| 15 W | 3000 K | 60° | >80 Ra | Yes | DK15-30608D-** |

SERIES DK

| Power | Colour Temperature | Beam Angle | CRI | Dimmable | |
|-------|--------------------|------------|--------|----------|----------------|
| 15 W | 4000 K | 60° | >80 Ra | Yes | DK15-40608D-** |
| 15 W | 5000 K | 60° | >80 Ra | Yes | DK15-50608D-** |
| 15 W | 2700 K | 15° | >90 Ra | Yes | DK15-27159D-** |
| 15 W | 3000 K | 15° | >90 Ra | Yes | DK15-30159D-** |
| 15 W | 4000 K | 15° | >90 Ra | Yes | DK15-40159D-** |
| 15 W | 5000 K | 15° | >90 Ra | Yes | DK15-50159D-** |
| 15 W | 2700 K | 30° | >90 Ra | Yes | DK15-27309D-** |
| 15 W | 3000 K | 30° | >90 Ra | Yes | DK15-30309D-** |
| 15 W | 4000 K | 30° | >90 Ra | Yes | DK15-40309D-** |
| 15 W | 5000 K | 30° | >90 Ra | Yes | DK15-50309D-** |
| 15 W | 2700 K | 60° | >90 Ra | Yes | DK15-27609D-** |
| 15 W | 3000 K | 60° | >90 Ra | Yes | DK15-30609D-** |
| 15 W | 4000 K | 60° | >90 Ra | Yes | DK15-40609D-** |
| 15 W | 5000 K | 60° | >90 Ra | Yes | DK15-50609D-** |

** Add frame code (if required)



Technical

| | |
|---------------------|-----------------------------------|
| LED | CREE |
| LED Quantity | 1 pc |
| System Power | 20 W |
| Lumen Output | 1700 lm @ 4000 K |
| Colour Temperature | 2700 K / 3000 K / 4000 K / 5000 K |
| CRI | >80 Ra / >90 Ra |
| Beam Angle | 15° / 30° / 60° |
| Input Current | 500 mA |
| UGR | <19 |
| System Efficiency | up to 90 lm/W |
| SDCM (MacAdam step) | <4 |
| Starting Time | <1s |
| Dimming | 0-10 V / PWM / DALI / TRIAC |
| Rated Lifespan | >50000 hrs (L70) |

Materials

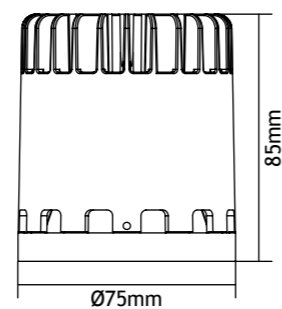
| | |
|--------------|----------------------------|
| Body Shell | Die-cast Aluminium, ADC 12 |
| Lens | Clear |
| Colour | Grey |
| PCB | Aluminium 1070 |
| Installation | Frames optional |
| Weight | 0.55 kg |

Power Supply

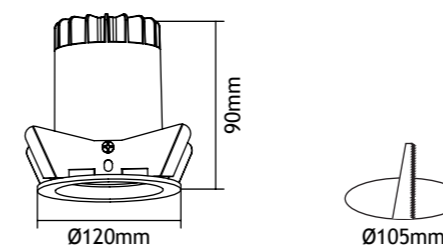
| | |
|-----------------|------------------|
| Type | Constant Current |
| Input Voltage | AC100-240 V |
| Input Frequency | 50 / 60 Hz |
| Output Current | 500 mA |
| Power Factor | > 0.95 |
| Efficiency | > 86 % |

Environmental

| | |
|-----------------------|----------------|
| Operating Temperature | -20°C - 40°C |
| Humidity | 10 % - 90 % RH |
| IP Rating | IP20 |



Frame Code: 01

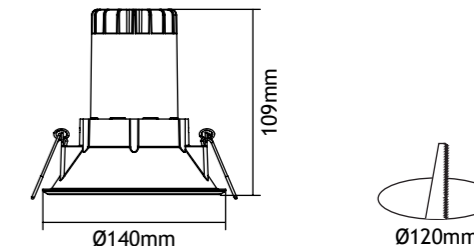


Materials

| | |
|--------------|----------------------------|
| Frame | Die-cast Aluminium, ADC 12 |
| Colour | White |
| Installation | Recessed |
| Weight | 0.80 kg |



Frame Code: 02

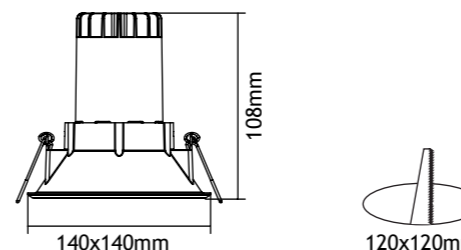


Materials

| | |
|--------------|----------------------------|
| Frame | Die-cast Aluminium, ADC 12 |
| Colour | White |
| Installation | Recessed |
| Weight | 0.82 kg |



Frame Code: 03

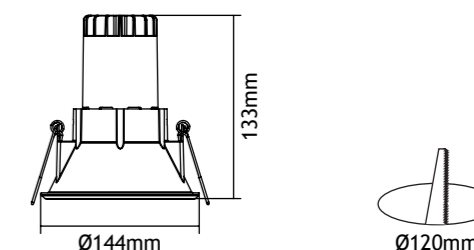


Materials

| | |
|--------------|----------------------------|
| Frame | Die-cast Aluminium, ADC 12 |
| Colour | White |
| Installation | Recessed |
| Weight | 0.84 kg |



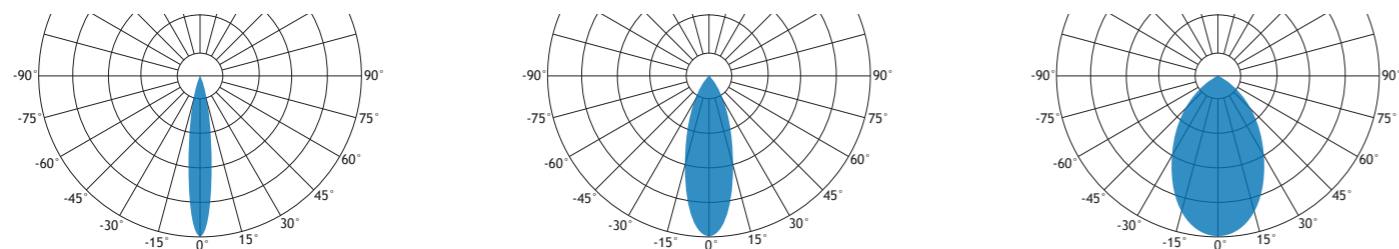
Frame Code: 06



Materials

| | |
|--------------|----------------------------|
| Frame | Die-cast Aluminium, ADC 12 |
| Colour | White |
| Reflector | Anodic Oxidized |
| Installation | Recessed |
| Weight | 0.90 kg |

SERIES DK



Product Order Codes

| Power | Colour Temperature | Beam Angle | CRI | Dimmable | |
|-------|--------------------|------------|--------|----------|----------------|
| 20 W | 2700 K | 15° | >80 Ra | No | DK20-27158N-** |
| 20 W | 3000 K | 15° | >80 Ra | No | DK20-30158N-** |
| 20 W | 4000 K | 15° | >80 Ra | No | DK20-40158N-** |
| 20 W | 5000 K | 15° | >80 Ra | No | DK20-50158N-** |
| 20 W | 2700 K | 30° | >80 Ra | No | DK20-27308N-** |
| 20 W | 3000 K | 30° | >80 Ra | No | DK20-30308N-** |
| 20 W | 4000 K | 30° | >80 Ra | No | DK20-40308N-** |
| 20 W | 5000 K | 30° | >80 Ra | No | DK20-50308N-** |
| 20 W | 2700 K | 60° | >80 Ra | No | DK20-27608N-** |
| 20 W | 3000 K | 60° | >80 Ra | No | DK20-30608N-** |
| 20 W | 4000 K | 60° | >80 Ra | No | DK20-40608N-** |
| 20 W | 5000 K | 60° | >80 Ra | No | DK20-50608N-** |
| 20 W | 2700 K | 15° | >90 Ra | No | DK20-27159N-** |
| 20 W | 3000 K | 15° | >90 Ra | No | DK20-30159N-** |
| 20 W | 4000 K | 15° | >90 Ra | No | DK20-40159N-** |
| 20 W | 5000 K | 15° | >90 Ra | No | DK20-50159N-** |
| 20 W | 2700 K | 30° | >90 Ra | No | DK20-27309N-** |
| 20 W | 3000 K | 30° | >90 Ra | No | DK20-30309N-** |
| 20 W | 4000 K | 30° | >90 Ra | No | DK20-40309N-** |
| 20 W | 5000 K | 30° | >90 Ra | No | DK20-50309N-** |
| 20 W | 2700 K | 60° | >90 Ra | No | DK20-27609N-** |
| 20 W | 3000 K | 60° | >90 Ra | No | DK20-30609N-** |
| 20 W | 4000 K | 60° | >90 Ra | No | DK20-40609N-** |
| 20 W | 5000 K | 60° | >90 Ra | No | DK20-50609N-** |
| 20 W | 2700 K | 15° | >80 Ra | Yes | DK20-27158D-** |
| 20 W | 3000 K | 15° | >80 Ra | Yes | DK20-30158D-** |
| 20 W | 4000 K | 15° | >80 Ra | Yes | DK20-40158D-** |
| 20 W | 5000 K | 15° | >80 Ra | Yes | DK20-50158D-** |
| 20 W | 2700 K | 30° | >80 Ra | Yes | DK20-27308D-** |
| 20 W | 3000 K | 30° | >80 Ra | Yes | DK20-30308D-** |
| 20 W | 4000 K | 30° | >80 Ra | Yes | DK20-40308D-** |
| 20 W | 5000 K | 30° | >80 Ra | Yes | DK20-50308D-** |
| 20 W | 2700 K | 60° | >80 Ra | Yes | DK20-27608D-** |
| 20 W | 3000 K | 60° | >80 Ra | Yes | DK20-30608D-** |

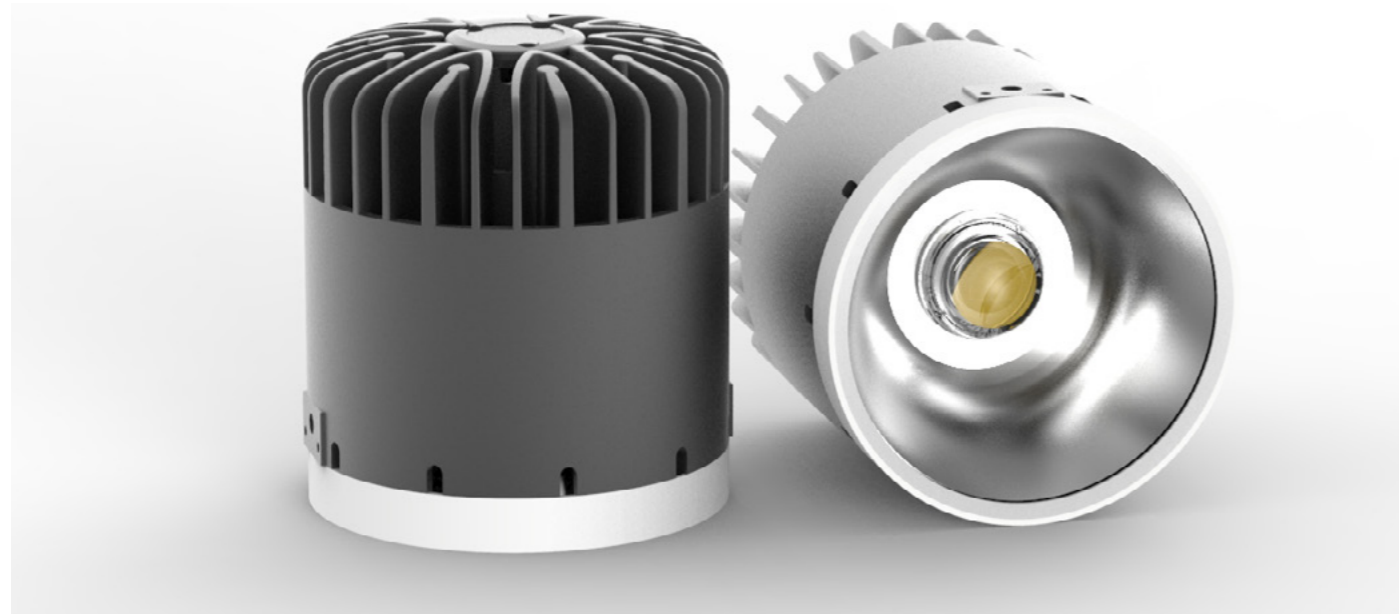
SERIES DK

| Power | Colour Temperature | Beam Angle | CRI | Dimmable | |
|-------|--------------------|------------|--------|----------|----------------|
| 20 W | 4000 K | 60° | >80 Ra | Yes | DK20-40608D-** |
| 20 W | 5000 K | 60° | >80 Ra | Yes | DK20-50608D-** |
| 20 W | 2700 K | 15° | >90 Ra | Yes | DK20-27159D-** |
| 20 W | 3000 K | 15° | >90 Ra | Yes | DK20-30159D-** |
| 20 W | 4000 K | 15° | >90 Ra | Yes | DK20-40159D-** |
| 20 W | 5000 K | 15° | >90 Ra | Yes | DK20-50159D-** |
| 20 W | 2700 K | 30° | >90 Ra | Yes | DK20-27309D-** |
| 20 W | 3000 K | 30° | >90 Ra | Yes | DK20-30309D-** |
| 20 W | 4000 K | 30° | >90 Ra | Yes | DK20-40309D-** |
| 20 W | 5000 K | 30° | >90 Ra | Yes | DK20-50309D-** |
| 20 W | 2700 K | 60° | >90 Ra | Yes | DK20-27609D-** |
| 20 W | 3000 K | 60° | >90 Ra | Yes | DK20-30609D-** |
| 20 W | 4000 K | 60° | >90 Ra | Yes | DK20-40609D-** |
| 20 W | 5000 K | 60° | >90 Ra | Yes | DK20-50609D-** |

** Add frame code (if required)

30 W

SERIES DK



Technical

| | |
|---------------------|-----------------------------------|
| LED | CREE |
| LED Quantity | 1 pc |
| System Power | 30 W |
| Lumen Output | 2400 lm @ 4000 K |
| Colour Temperature | 2700 K / 3000 K / 4000 K / 5000 K |
| CRI | >80 Ra / 90 Ra |
| Beam Angle | 12° / 45° / 60° |
| Input Current | 670 mA |
| UGR | <19 |
| System Efficiency | up to 85 lm/W |
| SDCM (MacAdam step) | <4 |
| Starting Time | <1s |
| Dimming | 0-10 V / PWM / DALI / TRIAC |
| Rated Lifespan | >50000 hrs (L70) |

Materials

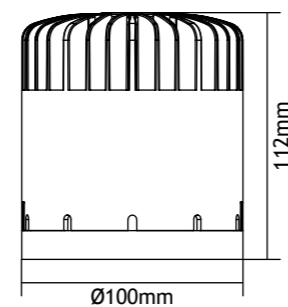
| | |
|--------------|----------------------------|
| Body Shell | Die-cast Aluminium, ADC 12 |
| Lens | Clear |
| Colour | Grey |
| PCB | Aluminium 1070 |
| Installation | Frames optional |
| Weight | 0.90 kg |

Power Supply

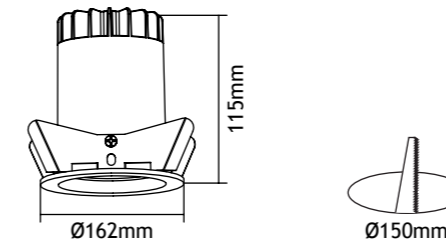
| | |
|-----------------|------------------|
| Type | Constant Current |
| Input Voltage | AC100-240 V |
| Input Frequency | 50 / 60 Hz |
| Output Current | 670 mA |
| Power Factor | > 0.95 |
| Efficiency | > 86 % |

Environmental

| | |
|-----------------------|----------------|
| Operating Temperature | -20°C - 40°C |
| Humidity | 10 % - 90 % RH |
| IP Rating | IP20 |

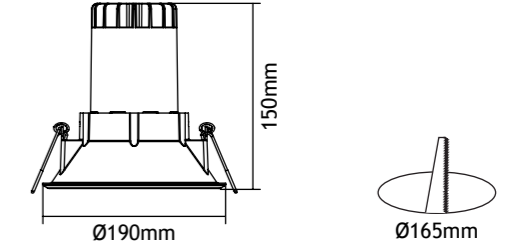


SERIES DK



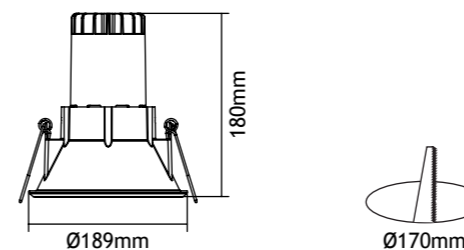
Materials

| | |
|--------------|----------------------------|
| Frame | Die-cast Aluminium, ADC 12 |
| Colour | White |
| Installation | Recessed |
| Weight | 1 kg |



Materials

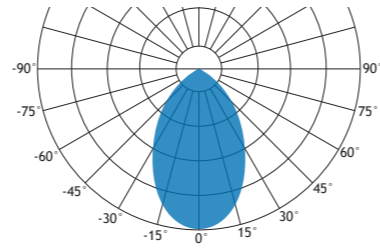
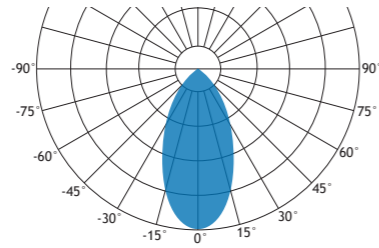
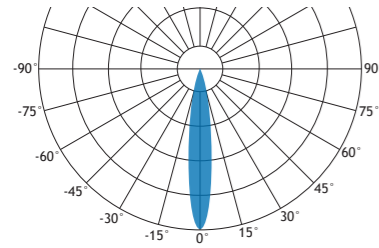
| | |
|--------------|----------------------------|
| Frame | Die-cast Aluminium, ADC 12 |
| Colour | White |
| Installation | Recessed |
| Weight | 1.45 kg |



Materials

| | |
|--------------|----------------------------|
| Frame | Die-cast Aluminium, ADC 12 |
| Colour | White |
| Reflector | Anodic Oxidized |
| Installation | Recessed |
| Weight | 1.45 kg |

SERIES DK



Product Order Codes

| Power | Colour Temperature | Beam Angle | CRI | Dimmable | |
|-------|--------------------|------------|--------|----------|----------------|
| 30 W | 2700 K | 12° | >80 Ra | No | DK30-27128N-** |
| 30 W | 3000 K | 12° | >80 Ra | No | DK30-30128N-** |
| 30 W | 4000 K | 12° | >80 Ra | No | DK30-40128N-** |
| 30 W | 5000 K | 12° | >80 Ra | No | DK30-50128N-** |
| 30 W | 2700 K | 45° | >80 Ra | No | DK30-27458N-** |
| 30 W | 3000 K | 45° | >80 Ra | No | DK30-30458N-** |
| 30 W | 4000 K | 45° | >80 Ra | No | DK30-40458N-** |
| 30 W | 5000 K | 45° | >80 Ra | No | DK30-50458N-** |
| 30 W | 2700 K | 60° | >80 Ra | No | DK30-27608N-** |
| 30 W | 3000 K | 60° | >80 Ra | No | DK30-30608N-** |
| 30 W | 4000 K | 60° | >80 Ra | No | DK30-40608N-** |
| 30 W | 5000 K | 60° | >80 Ra | No | DK30-50608N-** |
| 30 W | 2700 K | 12° | >90 Ra | No | DK30-27129N-** |
| 30 W | 3000 K | 12° | >90 Ra | No | DK30-30129N-** |
| 30 W | 4000 K | 12° | >90 Ra | No | DK30-40129N-** |
| 30 W | 5000 K | 12° | >90 Ra | No | DK30-50129N-** |
| 30 W | 2700 K | 45° | >90 Ra | No | DK30-27459N-** |
| 30 W | 3000 K | 45° | >90 Ra | No | DK30-30459N-** |
| 30 W | 4000 K | 45° | >90 Ra | No | DK30-40459N-** |
| 30 W | 5000 K | 45° | >90 Ra | No | DK30-50459N-** |
| 30 W | 2700 K | 60° | >90 Ra | No | DK30-27609N-** |
| 30 W | 3000 K | 60° | >90 Ra | No | DK30-30609N-** |
| 30 W | 4000 K | 60° | >90 Ra | No | DK30-40609N-** |
| 30 W | 5000 K | 60° | >90 Ra | No | DK30-50609N-** |
| 30 W | 2700 K | 12° | >80 Ra | Yes | DK30-27128D-** |
| 30 W | 3000 K | 12° | >80 Ra | Yes | DK30-30128D-** |
| 30 W | 4000 K | 12° | >80 Ra | Yes | DK30-40128D-** |
| 30 W | 5000 K | 12° | >80 Ra | Yes | DK30-50128D-** |
| 30 W | 2700 K | 45° | >80 Ra | Yes | DK30-27458D-** |
| 30 W | 3000 K | 45° | >80 Ra | Yes | DK30-30458D-** |
| 30 W | 4000 K | 45° | >80 Ra | Yes | DK30-40458D-** |
| 30 W | 5000 K | 45° | >80 Ra | Yes | DK30-50458D-** |
| 30 W | 2700 K | 60° | >80 Ra | Yes | DK30-27608D-** |
| 30 W | 3000 K | 60° | >80 Ra | Yes | DK30-30608D-** |

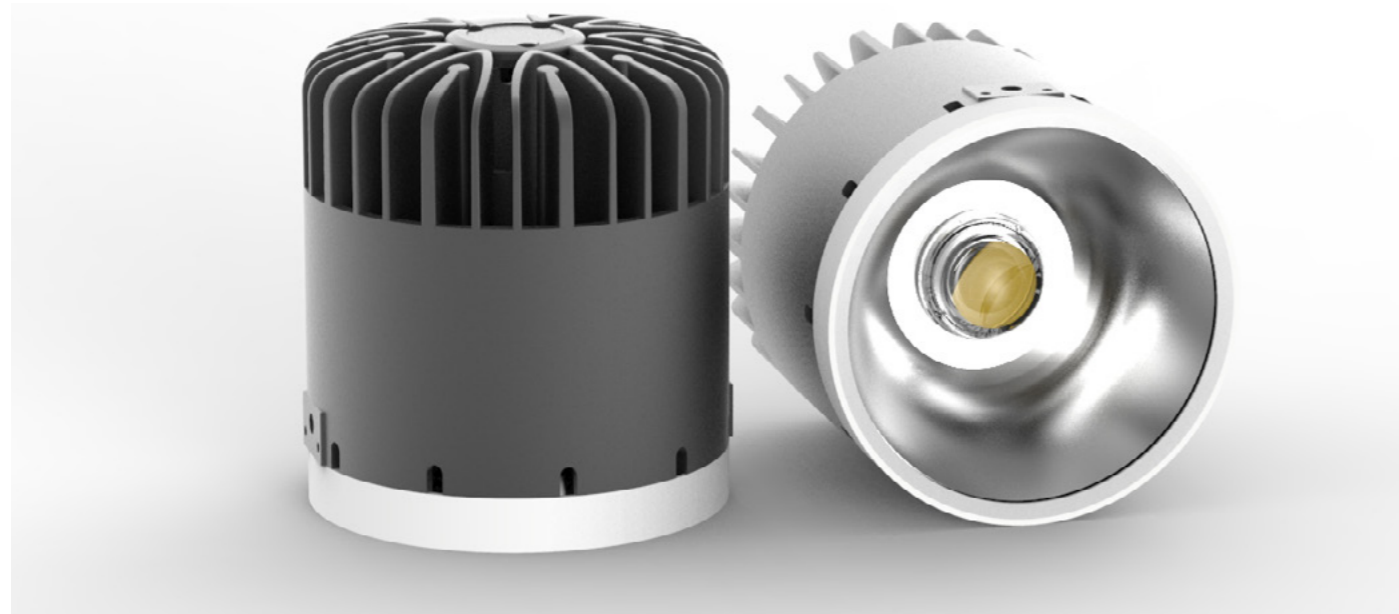
SERIES DK

| Power | Colour Temperature | Beam Angle | CRI | Dimmable | |
|-------|--------------------|------------|--------|----------|----------------|
| 10 W | 4000 K | 60° | >80 Ra | Yes | DK30-40608D-** |
| 10 W | 5000 K | 60° | >80 Ra | Yes | DK30-50608D-** |
| 10 W | 2700 K | 12° | >90 Ra | Yes | DK30-27129D-** |
| 10 W | 3000 K | 12° | >90 Ra | Yes | DK30-30129D-** |
| 10 W | 4000 K | 12° | >90 Ra | Yes | DK30-40129D-** |
| 10 W | 5000 K | 12° | >90 Ra | Yes | DK30-50129D-** |
| 10 W | 2700 K | 45° | >90 Ra | Yes | DK30-27459D-** |
| 10 W | 3000 K | 45° | >90 Ra | Yes | DK30-30459D-** |
| 10 W | 4000 K | 45° | >90 Ra | Yes | DK30-40459D-** |
| 10 W | 5000 K | 45° | >90 Ra | Yes | DK30-50459D-** |
| 10 W | 2700 K | 60° | >90 Ra | Yes | DK30-27609D-** |
| 10 W | 3000 K | 60° | >90 Ra | Yes | DK30-30609D-** |
| 10 W | 4000 K | 60° | >90 Ra | Yes | DK30-40609D-** |
| 10 W | 5000 K | 60° | >90 Ra | Yes | DK30-50609D-** |

** Add frame code (if required)

40 W

SERIES DK



Technical

| | |
|---------------------|-----------------------------------|
| LED | CREE |
| LED Quantity | 1 pc |
| System Power | 40 W |
| Lumen Output | 3200 lm @ 4000 K |
| Colour Temperature | 2700 K / 3000 K / 4000 K / 5000 K |
| CRI | >80 Ra / >90 Ra |
| Beam Angle | 12° / 45° / 60° |
| Input Current | 900 mA |
| UGR | <19 |
| System Efficiency | up to 85 lm/W |
| SDCM (MacAdam step) | <4 |
| Starting Time | <1s |
| Dimming | 0-10 V / PWM / DALI / TRIAC |
| Rated Lifespan | >50000 hrs (L70) |

Materials

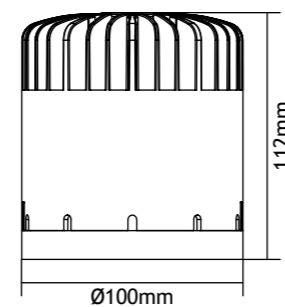
| | |
|--------------|----------------------------|
| Body Shell | Die-cast Aluminium, ADC 12 |
| Lens | Clear |
| Colour | Grey |
| PCB | Aluminium 1070 |
| Installation | Frames optional |
| Weight | 0.90 kg |

Power Supply

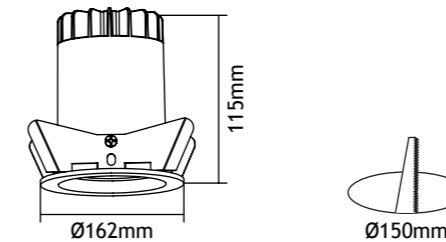
| | |
|-----------------|------------------|
| Type | Constant Current |
| Input Voltage | AC100-240 V |
| Input Frequency | 50 / 60 Hz |
| Output Current | 900 mA |
| Power Factor | > 0.95 |
| Efficiency | > 86 % |

Environmental

| | |
|-----------------------|----------------|
| Operating Temperature | -20°C - 40°C |
| Humidity | 10 % - 90 % RH |
| IP Rating | IP20 |

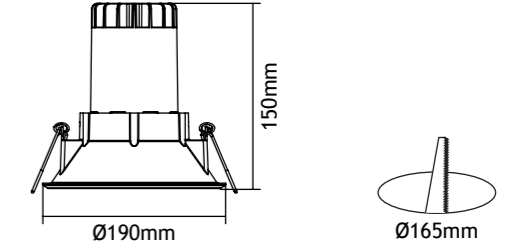


SERIES DK



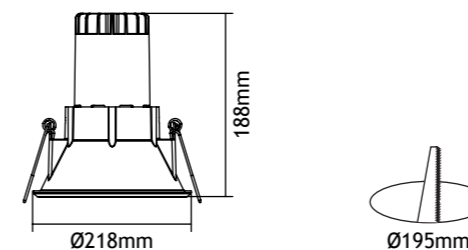
Materials

| | |
|--------------|----------------------------|
| Frame | Die-cast Aluminium, ADC 12 |
| Colour | White |
| Installation | Recessed |
| Weight | 1 kg |



Materials

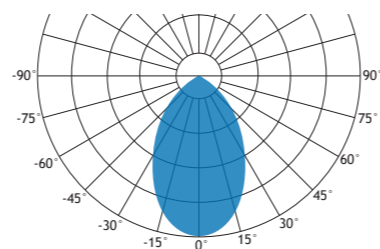
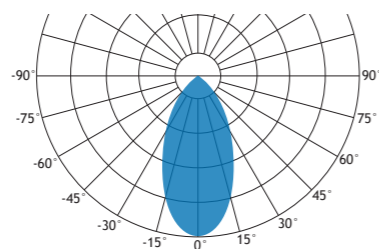
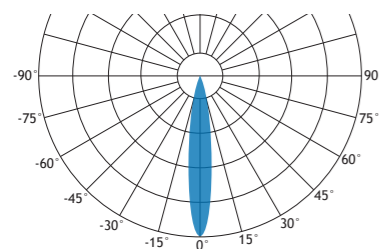
| | |
|--------------|----------------------------|
| Frame | Die-cast Aluminium, ADC 12 |
| Colour | White |
| Installation | Recessed |
| Weight | 1.45 kg |



Materials

| | |
|--------------|----------------------------|
| Frame | Die-cast Aluminium, ADC 12 |
| Colour | White |
| Reflector | Anodic Oxidized |
| Installation | Recessed |
| Weight | 1.60 kg |

SERIES DK



Product Order Codes

| Power | Colour Temperature | Beam Angle | CRI | Dimmable | |
|-------|--------------------|------------|--------|----------|----------------|
| 40 W | 2700 K | 12° | >80 Ra | No | DK40-27128N-** |
| 40 W | 3000 K | 12° | >80 Ra | No | DK40-30128N-** |
| 40 W | 4000 K | 12° | >80 Ra | No | DK40-40128N-** |
| 40 W | 5000 K | 12° | >80 Ra | No | DK40-50128N-** |
| 40 W | 2700 K | 45° | >80 Ra | No | DK40-27458N-** |
| 40 W | 3000 K | 45° | >80 Ra | No | DK40-30458N-** |
| 40 W | 4000 K | 45° | >80 Ra | No | DK40-40458N-** |
| 40 W | 5000 K | 45° | >80 Ra | No | DK40-50458N-** |
| 40 W | 2700 K | 60° | >80 Ra | No | DK40-27608N-** |
| 40 W | 3000 K | 60° | >80 Ra | No | DK40-30608N-** |
| 40 W | 4000 K | 60° | >80 Ra | No | DK40-40608N-** |
| 40 W | 5000 K | 60° | >80 Ra | No | DK40-50608N-** |
| 40 W | 2700 K | 12° | >90 Ra | No | DK40-27129N-** |
| 40 W | 3000 K | 12° | >90 Ra | No | DK40-30129N-** |
| 40 W | 4000 K | 12° | >90 Ra | No | DK40-40129N-** |
| 40 W | 5000 K | 12° | >90 Ra | No | DK40-50129N-** |
| 40 W | 2700 K | 45° | >90 Ra | No | DK40-27459N-** |
| 40 W | 3000 K | 45° | >90 Ra | No | DK40-30459N-** |
| 40 W | 4000 K | 45° | >90 Ra | No | DK40-40459N-** |
| 40 W | 5000 K | 45° | >90 Ra | No | DK40-50459N-** |
| 40 W | 2700 K | 60° | >90 Ra | No | DK40-27609N-** |
| 40 W | 3000 K | 60° | >90 Ra | No | DK40-30609N-** |
| 40 W | 4000 K | 60° | >90 Ra | No | DK40-40609N-** |
| 40 W | 5000 K | 60° | >90 Ra | No | DK40-50609N-** |
| 40 W | 2700 K | 12° | >80 Ra | Yes | DK40-27128D-** |
| 40 W | 3000 K | 12° | >80 Ra | Yes | DK40-30128D-** |
| 40 W | 4000 K | 12° | >80 Ra | Yes | DK40-40128D-** |
| 40 W | 5000 K | 12° | >80 Ra | Yes | DK40-50128D-** |
| 40 W | 2700 K | 45° | >80 Ra | Yes | DK40-27458D-** |
| 40 W | 3000 K | 45° | >80 Ra | Yes | DK40-30458D-** |
| 40 W | 4000 K | 45° | >80 Ra | Yes | DK40-40458D-** |
| 40 W | 5000 K | 45° | >80 Ra | Yes | DK40-50458D-** |
| 40 W | 2700 K | 60° | >80 Ra | Yes | DK40-27608D-** |
| 40 W | 3000 K | 60° | >80 Ra | Yes | DK40-30608D-** |

SERIES DK

| Power | Colour Temperature | Beam Angle | CRI | Dimmable | |
|-------|--------------------|------------|--------|----------|----------------|
| 40 W | 4000 K | 60° | >80 Ra | Yes | DK40-40608D-** |
| 40 W | 5000 K | 60° | >80 Ra | Yes | DK40-50608D-** |
| 40 W | 2700 K | 12° | >90 Ra | Yes | DK40-27129D-** |
| 40 W | 3000 K | 12° | >90 Ra | Yes | DK40-30129D-** |
| 40 W | 4000 K | 12° | >90 Ra | Yes | DK40-40129D-** |
| 40 W | 5000 K | 12° | >90 Ra | Yes | DK40-50129D-** |
| 40 W | 2700 K | 45° | >90 Ra | Yes | DK40-27459D-** |
| 40 W | 3000 K | 45° | >90 Ra | Yes | DK40-30459D-** |
| 40 W | 4000 K | 45° | >90 Ra | Yes | DK40-40459D-** |
| 40 W | 5000 K | 45° | >90 Ra | Yes | DK40-50459D-** |
| 40 W | 2700 K | 60° | >90 Ra | Yes | DK40-27609D-** |
| 40 W | 3000 K | 60° | >90 Ra | Yes | DK40-30609D-** |
| 40 W | 4000 K | 60° | >90 Ra | Yes | DK40-40609D-** |
| 40 W | 5000 K | 60° | >90 Ra | Yes | DK40-50609D-** |

** Add frame code (if required)